



Conservation Update

July 27, 2017

Dan Haller, PE



Draft PEIS Conservation Issues

- Conservation content in PEIS
- Conservation and climate change
- Conservation and legal constraints
- Conservation messaging

Draft PEIS Conservation Content

Every alternative has domestic, irrigation and hatchery conservation

| Projects | Proposed Alternatives | | | | |
|---|-----------------------|---------------|---------------|---------------|---------------|
| | No Action Alternative | Alternative 1 | Alternative 2 | Alternative 3 | Alternative 4 |
| Conservation | | | | | |
| IPID Irrigation Efficiencies | | • | • | • | • |
| COIC Irrigation Efficiencies (Piping) | | • | • | • | • |
| Domestic Conservation Efficiencies | | • | • | • | • |
| LNFH Conservation and Water Quality Improvements | | • | • | • | • |
| Pump Exchange | | | | | |
| IPID Dryden Pump Exchange | | ○ | • | • | |
| COIC Irrigation Efficiencies (Pump Exchange) | | • | • | • | • |
| Modification/Restoration of Existing Storage | | | | | |
| Alpine Lakes Reservoir Optimization, Modernization and Automation | | • | | | • |
| Eightmile Lake Storage Restoration | | • | • | | • |
| New Storage | | | | | |
| Eightmile Lake Storage Enhancement | | | | | • |
| Upper Klonauqua Lake Storage Enhancement | | | | | • |
| Upper and Lower Snow Lakes Storage Enhancement | | | | | • |
| Habitat/Fisheries Improvements | | | | | |
| Tribal Fishery Projection | | • | • | • | • |
| Habitat Protection and Enhancement | | • | • | • | • |
| Fish Passage | | • | • | • | • |
| Fish Screening | | • | • | • | • |
| Legislative/Administrative Tools | | | | | |
| Water Markets | | • | • | • | • |
| Instream Flow Rule Amendment | | • | • | • | • |
| OCPI legislative fix from instream flow impacts | | | | • | |

○ Represents a long-term project that could increase instream flow benefits if O&M funding is found

Draft PEIS Conservation Content

IWG Water Conservation Projects

| Project | Current Use from Icicle Creek (cfs) | Proposed Future Use from Icicle Creek 2050 (cfs) | Conserved Quantities (cfs) |
|--|-------------------------------------|--|----------------------------|
| IPID Irrigation Efficiencies | 117.7 | 107.6 | 10.1 |
| COIC Irrigation Efficiencies | 11.9 | 0.0 | 11.9 |
| Domestic Conservation Efficiencies ¹ | 3.1-6.2 | 3.1-8.7 | 0.5 |
| LNFH Conservation and Water Quality Improvements | 42.0 | 22.0 | 20.0 |
| IPID Pump Exchange | 117.7 | 92.7 | 25.0 |
| Total | | | 42.5 |

1. Current and future domestic use range is based on current physical diversion capacity and whether future growth is exercised from Icicle Creek or Wenatchee River sources.

Conservation and Climate Change

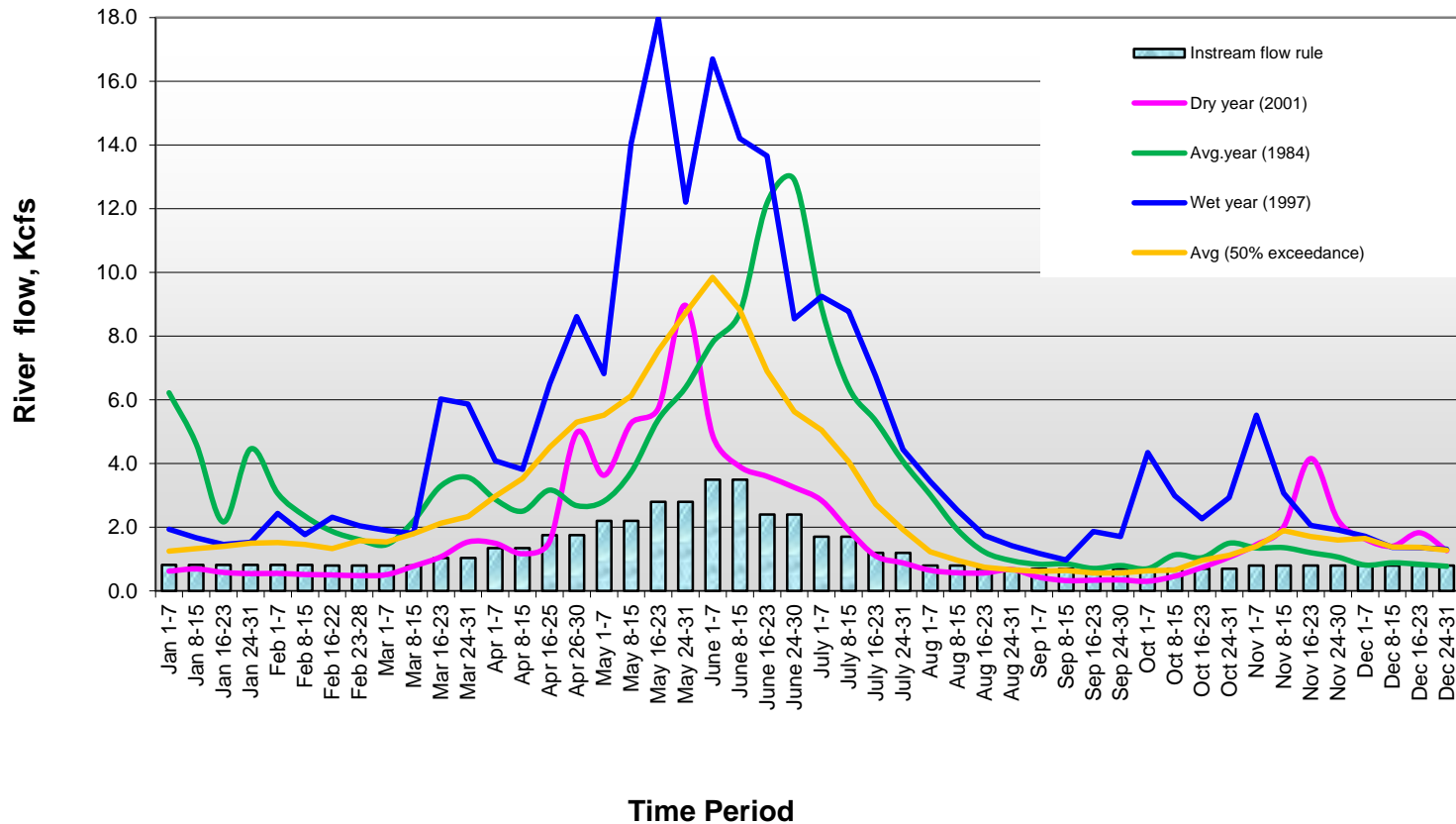
Summary of Findings (100 cfs Guiding Principle)

DRAFT

| | Low Change | Medium Change | High Change |
|---------------|-------------------|----------------------|--------------------|
| Alternative 1 | Yes | Yes | Yes |
| Alternative 2 | Yes | Yes | No |
| Alternative 3 | No | No | No |
| Alternative 4 | Yes | Yes | Yes |

Conservation and Legal Constraints

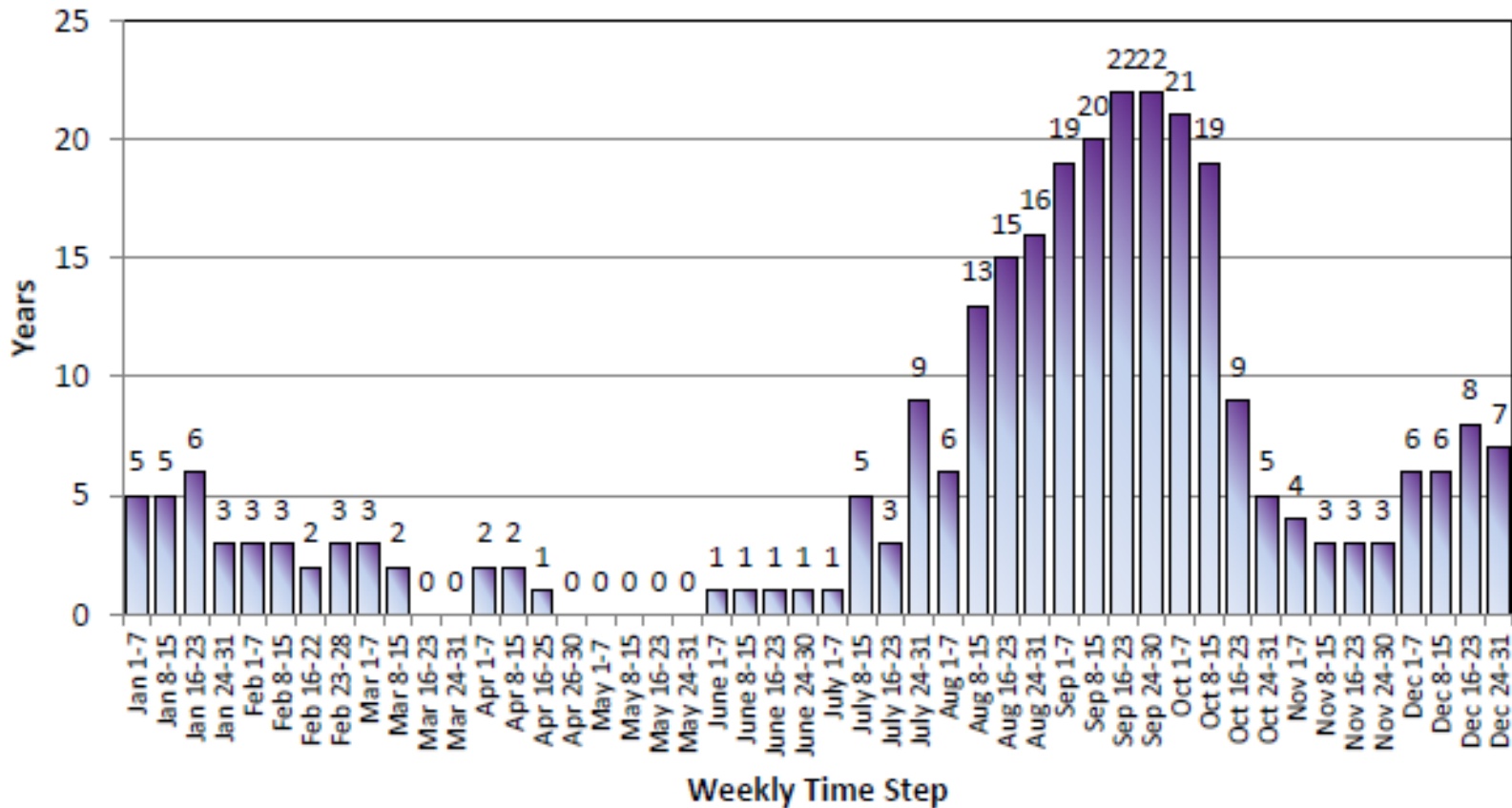
Comparison of Dry, Average and Wet Year Flows to Instream Flow Rule (*Wenatchee River at Monitor, WA*) 1981-2011



Conservation and Legal Constraints

Total Interruptible Years vs. Instream Flow Rule

(Wenatchee River at Peshastin, 1984-2014)



Conservation and Legal Constraints

- Conservation works well to meet the instream flow guiding principle.
- Conservation diminishes instream flow when used to meet out-of-stream guiding principle.
- In-kind, in-time, in-place standard under Foster/Yelm requires legal fix for implementation.

Conservation Messaging

- How do we communicate strong conservation focus of all packages?
- How do we communicate risks of a conservation-only approach?
- How do we set the stage for legal authority without becoming embroiled in the State issues around Hirst, Foster, and Swinomish?
- Where does conservation fit in project pairing and phasing?